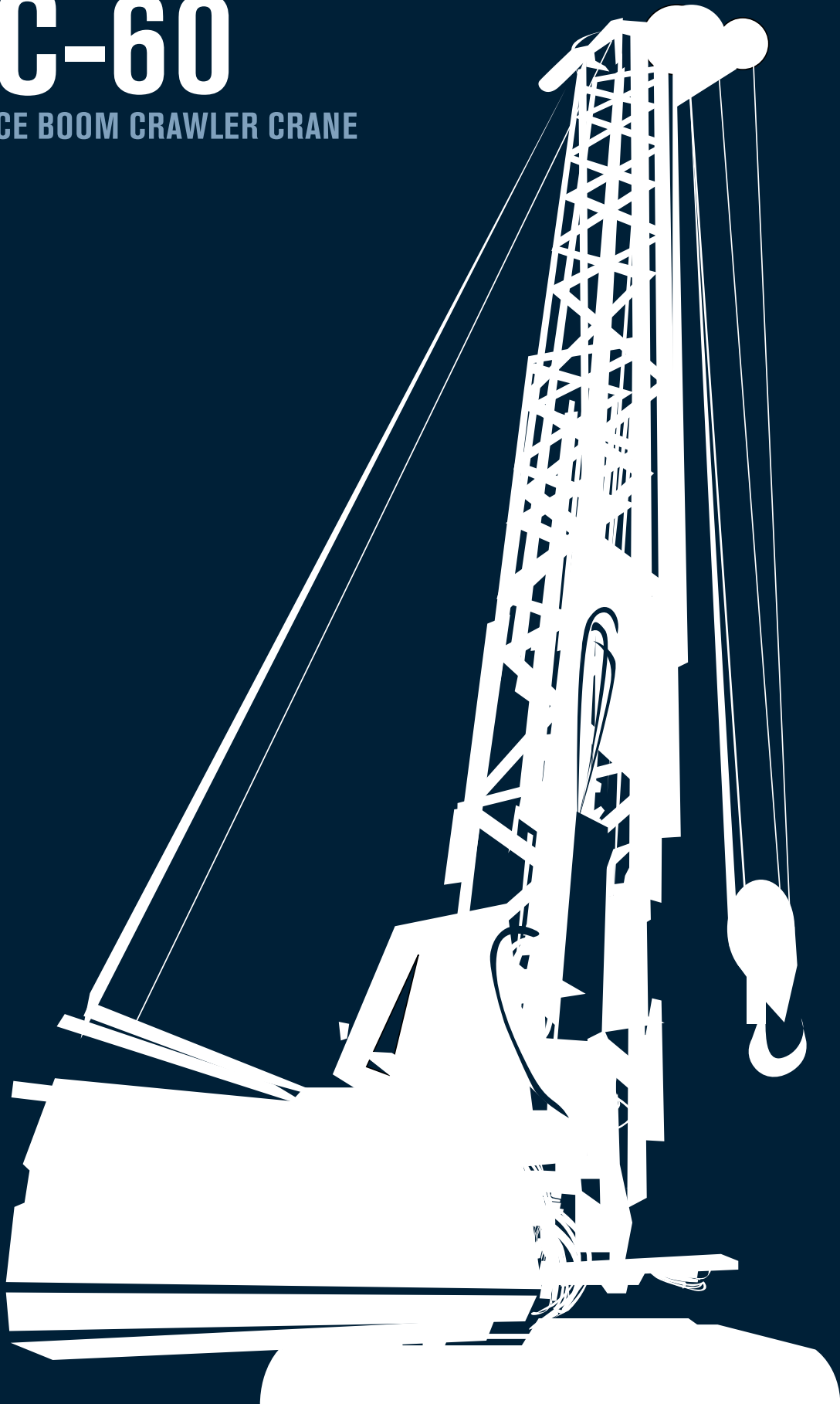
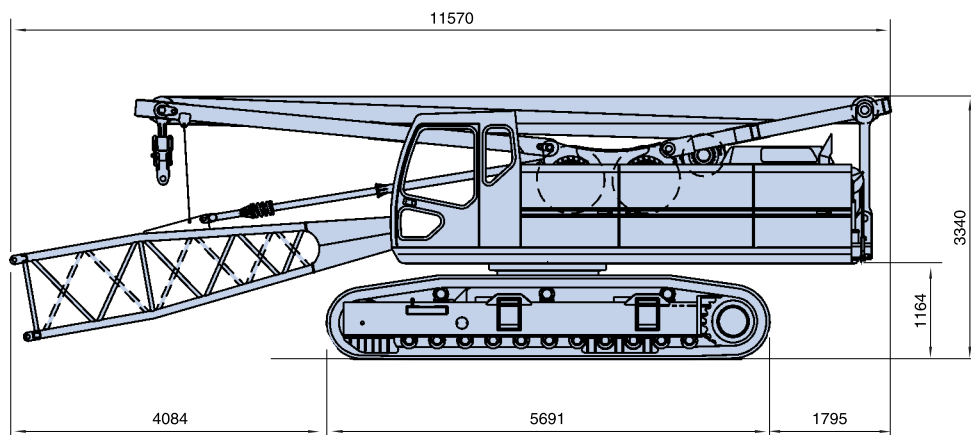
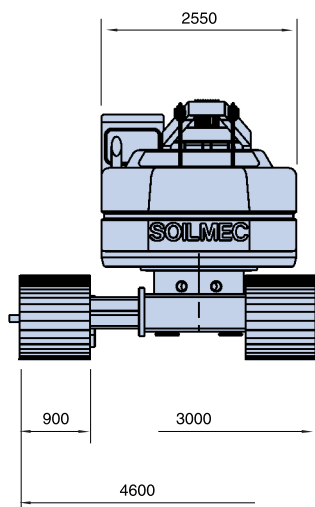


SC-60

LATTICE BOOM CRAWLER CRANE





ENGINE			
Make and model		DEUTZ BF6M1015C	
Rated Power ISO 3046/1 IFN III	HP (kW)	366 (273)@ 2000 rpm	
Cylinders		V-6	
Power supply		TA air to air	
HYDRAULIC SYSTEM			
Max flow (pressure)	l/min (MPa)	560 (30)	
Controls		proportional	
WINCHES free fall			
Line pull	kN	SF 200	SF 240
Rope diameter	mm	200*	240*
Displacement motor		Fixed disp.	Fixed disp.
WINCHES controlled descent			
Line pull	kN	SW 200	SW 200
Rope diameter	mm	26	30
Displacement motor		Fixed disp.	Var. disp.
TURRET			
Max width	mm	2550	
Rotation speed	rpm	0-2	
UNDERCARRIAGE			
Type		Extending gauge / Parallel beams	
Shoes width	mm	900	
Center of wheels	mm	4760	
Max track length	mm	5690	
Track gauge retracted (track gauge extended)	mm	2100 (3700)	
Retracted tracks width (extended tracks width)	mm	3000 (4600)	
Max travelling speed	km/h	1,6	
2nd speed-fast travelling		Not available optional	
GENERAL FEATURES			
Radius of rear end	mm	4650	
Max transport width (removed side frames)	mm	3000 (2500)	
Max transport height	mm	3372	
BOOM			
Tubular boom	mm	B x H	1100 x 1000
WEIGHTS			
Base machine	t	52	
Min/Max in working conditions	t	56,5 (60,5)	
Transport configuration	t	43,6	
Counterweight	t	10,5 + 1,5	
The shown weights may vary with different equipments			

* No safety ratio for crane

SOILMEC distributes machinery and structures all over the world, supported by SOILMEC subsidiary companies and representative offices as:

SOILMEC LTD - U.K.

SOILMEC MISR S.A.E. Co. - Egypt

SOILMEC (H.K.) Limited - Hong Kong

SOILMEC JAPAN CO LTD - Japan

SOILMEC S.P.A. - Beijing Repr. Office - P.R. China

SOILMEC FAR EAST PTE.LTD - Singapore

SOILMEC EMIRATES - U.A.E.

SOILMEC GULF - U.A.E.

SOILMEC FRANCE S.A.S. - France

SOILMEC INDIA - India

SOILMEC SPA - Moscow Repr. Office - Russia

CERTIFIED QUALITY SYSTEM

In 1990 Soilmec was awarded with the certification of its Quality System complying with ISO 9001:2000 and ISO 14001:2004 standards.



SOILMEC S.p.A.

Drilling and Foundation Equipment

5819, via Dismano

47023 Cesena (FC) - Italy

tel. +39-0547-319111

fax +39-0547-318548

[http:// www.soilmec.it](http://www.soilmec.it)

e-mail: soilmec@soilmec.it

All technical data are purely indicative and subject to change without notice

soilmec 
Drilling and Foundation Equipment