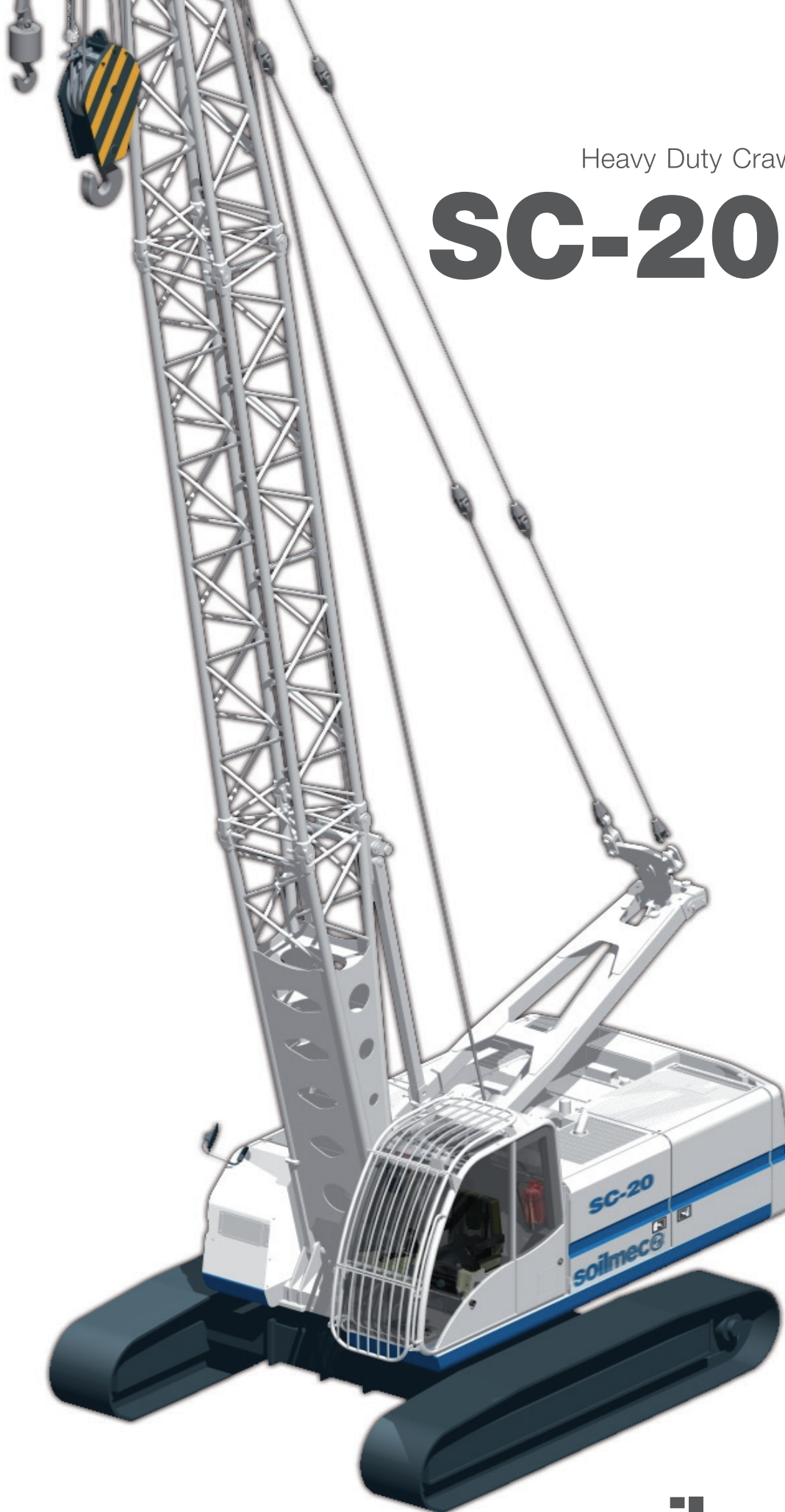


Heavy Duty Crawler Crane

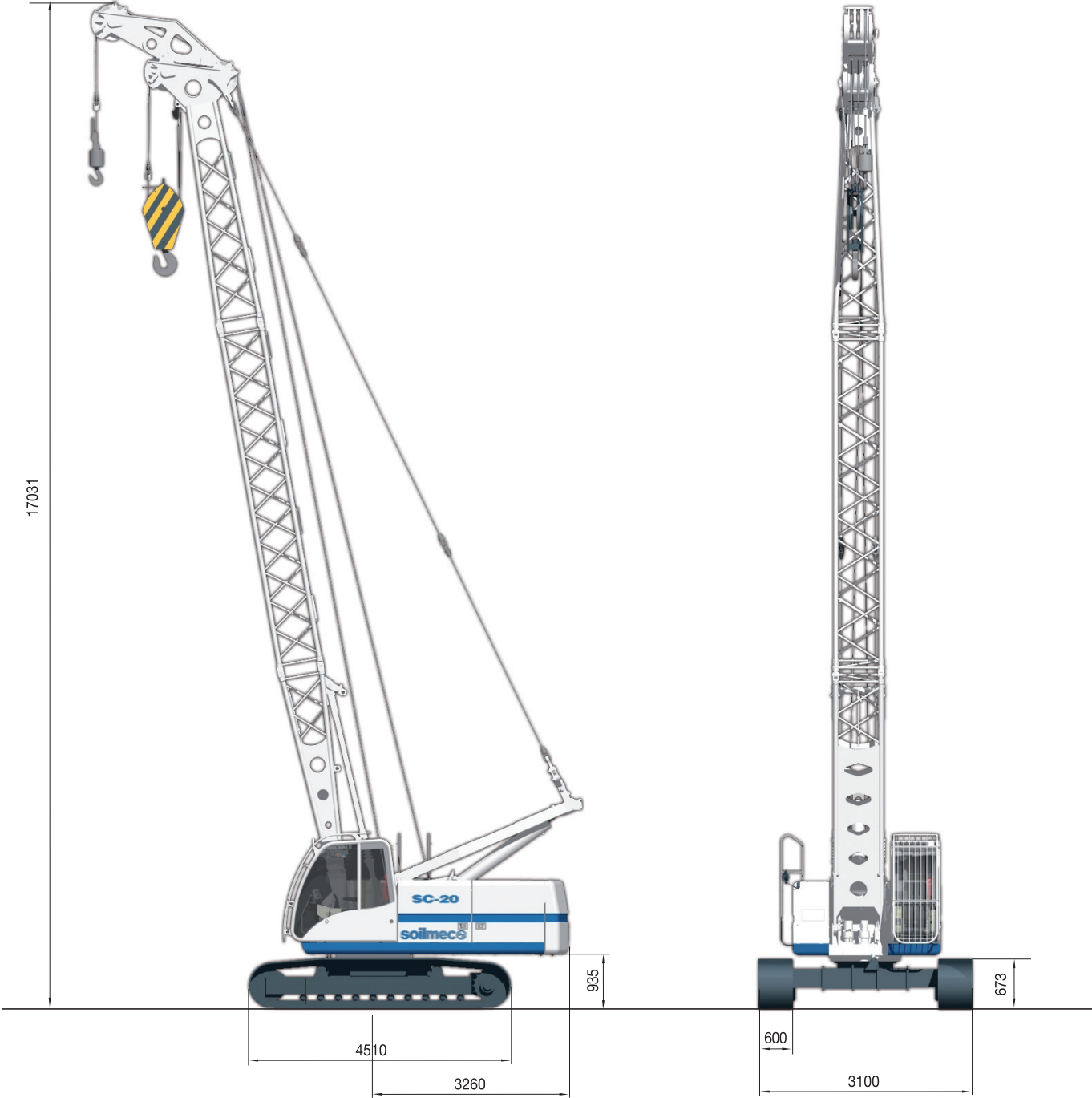
SC-20HD



soilmecc 
Drilling and Foundation Equipment

SC-20 HD Heavy Duty Crawler Crane


MAIN BOOM EQUIPMENT




SC-20 HD Heavy Duty Crawler Crane

TECHNICAL DATA SHEET

DIESEL ENGINE

	Model	CUMMINS QSB 4.5		
	Max rated power @ 2200 rpm	119 kW		159 HP
	Displacement	4,5 liters		1.2 US gal
	Number of cylinders and Arrangement	4 in line		
	Aspiration	turbocharged, air to air intercooled		
	Cooling	water cooled		
	Electric system	24 V		
	Emissions	QSB 4.5 meets EU 97/68 EC Stage IIIA and EPA/CARB Tier 3		


HYDRAULIC SYSTEM

	Max working pressure	30 MPa	4351 psi
	Max oil flow	Main pump: 290 l/min	77 US gal/min
	Cooling	oil-to-air heat exchanger	

MAIN WINCHES

	Winch type	LFF-84		LW-84		LW-40	
	Type	free fall		control descent		control descent	
	Drum groove type	Lebus		Lebus		Lebus	
Line pull (nominal load)	100 kN	22481 lbf	100 kN	22481 lbf	47,6 kN	10701 lbf	
Rope diameter	22 mm	0.87 in	22 mm	0.87 in	15 mm	0.87 in	
Rope speed	52 m/min	171 ft/min	52 m/min	171 ft/min	60 m/min	197 ft/min	
Rope capacity 1st layer	21 m	69 ft	21 m	69 ft	32 m	105 ft	


SWING

	Swing bearing	Double-row ball type with external teeth
	Swing drives	Type: planetary 2 stages Hydraulic motor: fixed displacement piston Swing brake type: multiple disc
	Max swing speed	3.1 rpm

UNDERCARRIAGE

	Type	Variable gauge, class D4d	
	Track shoes type	triple grouser	
	Overall width (retr./ext.)	2500 / 3700 mm	99 / 146 in
	Overall length	4510 mm	178 in
	Track shoe width	600 mm	24 in
	Travel speed	1,1 - 2,2 km/h	0.7 - 1.4 mph

SERVICE REFILL CAPACITIES

	Fuel tank	307 l	81.1 US gal
	Hydraulic oil tank	329 l	86.9 US gal

NOISE EMISSION

	Noise emissions correspond with 2000/14/EC directive on noise emission by equipment used outdoors.		
---	--	--	--

SC-20 HD Heavy Duty Crawler Crane

LOAD CHART

Capacity (t)

Boom Length (m)

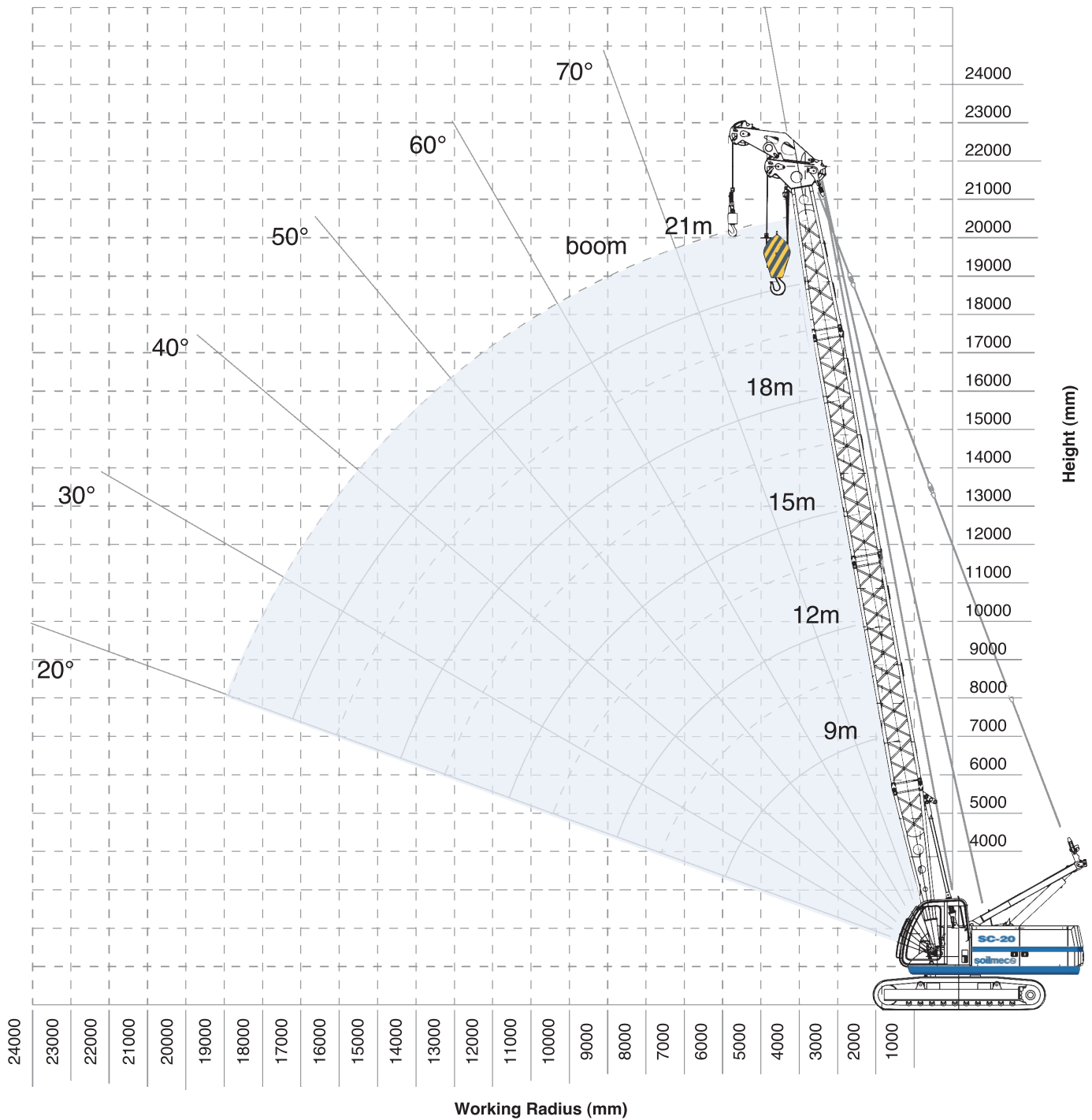
Radius (m)	9 m	12 m	15 m	18 m	21 m	Radius (m)
2,7	21,5					2,7
3,0	21,5					3,0
3,5	18,4	18,4				3,5
4,0	15,6	15,6	15,5			4,0
4,5	13,2	13,2	13,2	13,1		4,5
5,0	11,4	11,4	11,4	11,2	11,1	5,0
5,5	10,1	10,1	9,9	9,8	9,7	5,5
6,0	8,9	8,9	8,8	8,7	8,6	6,0
6,5	7,9	7,9	7,9	7,7	7,6	6,5
7,0	7,1	7,1	7,0	6,9	6,8	7,0
7,5	6,3	6,3	6,3	6,2	6,1	7,5
8,0	5,7	5,7	5,7	5,6	5,4	8,0
8,5	5,2	5,2	5,2	5,1	5,0	8,5
9,0	4,7	4,7	4,7	4,6	4,6	9,0
9,5	4,3	4,3	4,3	4,2	9,5	
10,0	4,0	4,0	3,9	3,8	10,0	
11,0	3,4	3,4	3,3	3,2	11,0	
12,0		2,9	2,8	2,7	12,0	
13,0		2,5	2,4	2,3	13,0	
14,0		2,1	2,1	2,0	14,0	
15,0		1,9	2,0	1,7	15,0	
16,0			1,5	1,4	16,0	
17,0			1,3	1,2	17,0	
18,0				1,0	18,0	
19,0				0,9	19,0	
20,0				0,7	20,0	
Part line	4	4	2	2	2	Part line

Boom configuration

Type	Lenght		N° of boom extensions				
Boom foot	4,5 m	14.7 ft	1	1	1	1	1
Boom insert	3 m	9.8 ft	–	1	–	1	–
Boom insert	6 m	19.7 ft	–	–	1	1	2
Boom head	4,5 m	14.7 ft	1	1	1	1	1
Boom lenght (m)			9	12	15	18	21
Boom lenght (ft)			29.5	39.3	49.2	59	69

SC-20 HD Heavy Duty Crawler Crane

MAIN BOOM



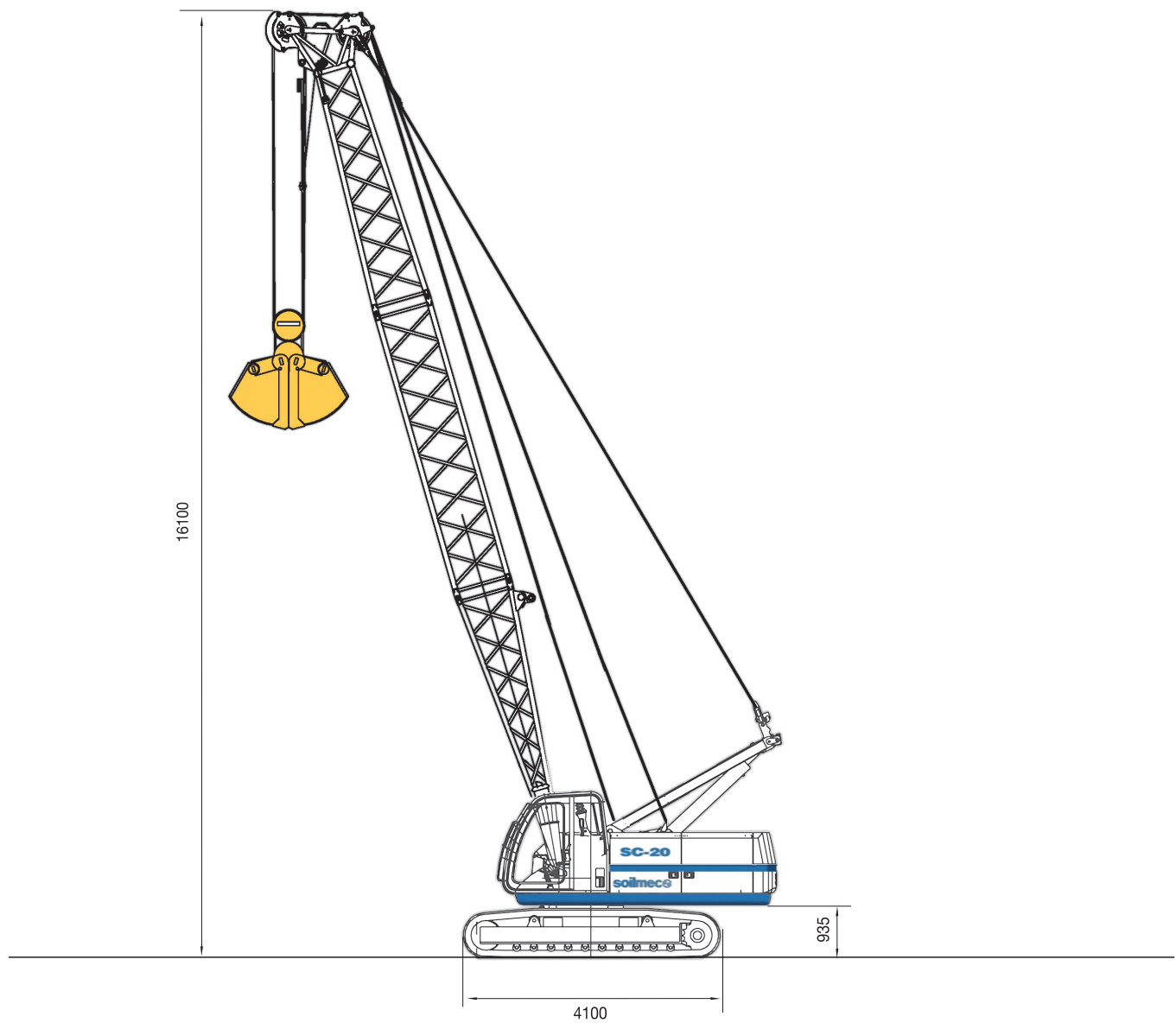
Auxiliary Jib	standard	optional	
Max capacity	8,5 t 18739 lb	25 t 55115 lb optional	Load chart programmed in Load moment indicator

Notes

- Rated loads are in metric tons valid for 360 degrees working area.
- Lifting capacities are in compliance with DIN 15019/part2/chart 1 and ISO 4305 and do not exceed 75% of tipping load.
- Working radius is measured from the swing center of the machine.
- Rated loads are calculated with the machine on firm and level ground, without travelling.
- Weights of lifting attachments (e.g.: hook, ropes, bucket, etc.) are included in the rated load: therefore their weights must be subtracted from rated load to obtain net lifting value.
- This load chart is valid if crawler frames are extended.
- Lifting capacities are based on freely suspended loads. Operator must reduce lifted loads and operating speeds in case of adverse conditions (e.g.: wind, soft ground, out-of-level, pendulum action, sudden load stopping, operating speeds, etc.)
- This load chart is only for reference. For actual lifting capacities please refer to load chart in operator's manual.
- Instruction in the "Operator's Manual" must be strictly observed during machine operations.
- Operations are not approved for working radius and boom lengths that have no ratings associated on load chart.

SC-20 HD Heavy Duty Crawler Crane

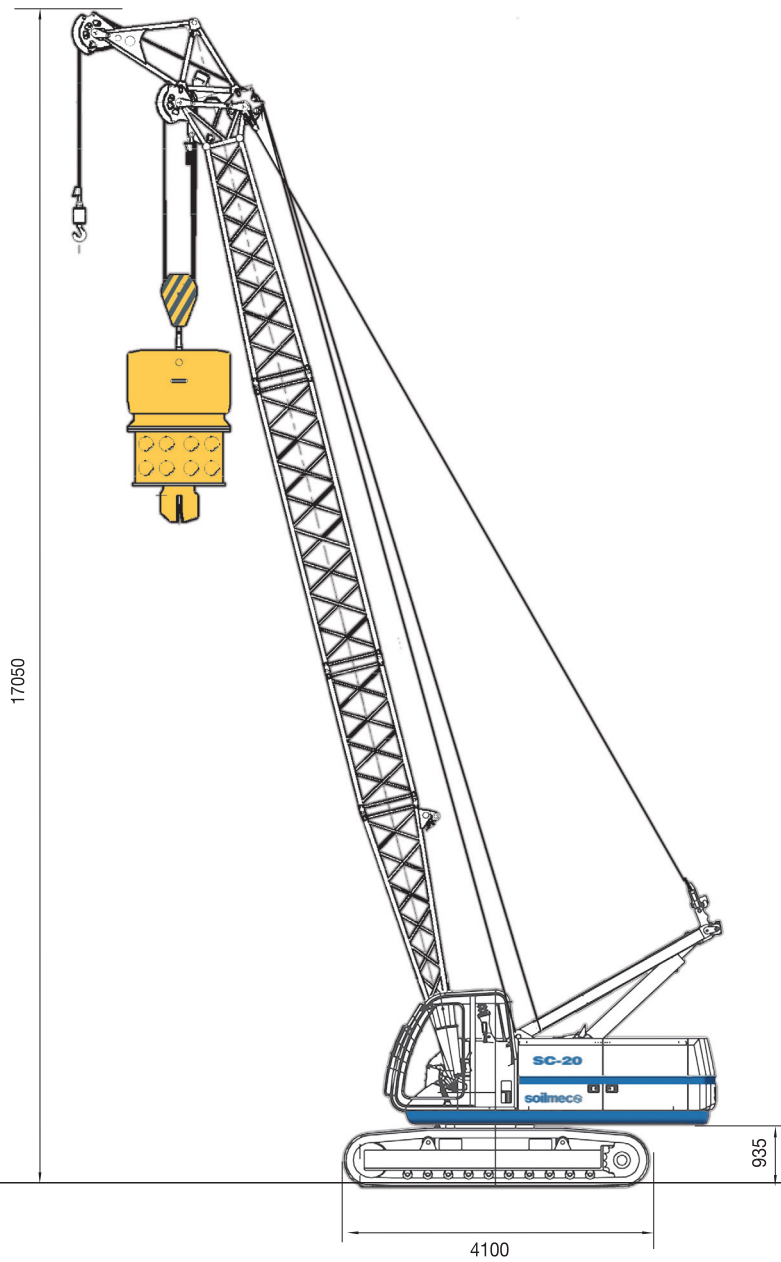
CLAMSHELL VERSION



Clamshell equipment		
Winches	8,4 t	18519 lb
Clamshell with one rope	9 t	19841 lb
Clamshell with two ropes	12 t	26455 lb

SC-20 HD Heavy Duty Crawler Crane

VIBRATORY VERSION



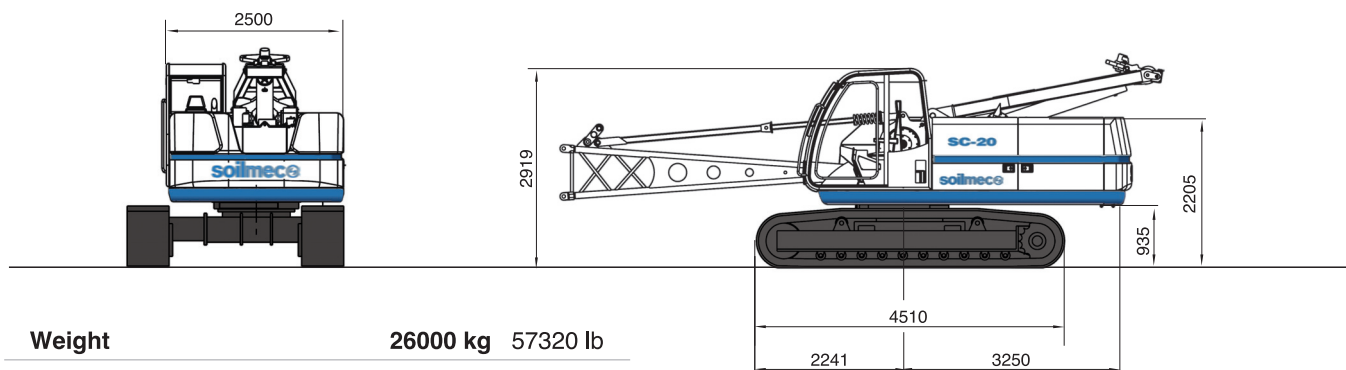
Vibratory drivers equipment

Winches	8,4 t	18519 lb
Max vibrator weight	3 t	6614 lb

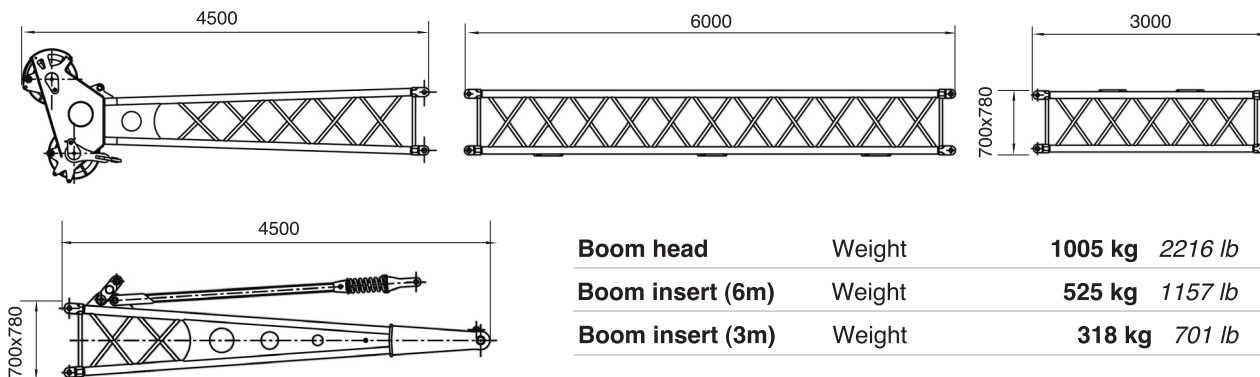
SC-20 HD Heavy Duty Crawler Crane

TRANSPORT, DIMENSIONS AND WEIGHTS

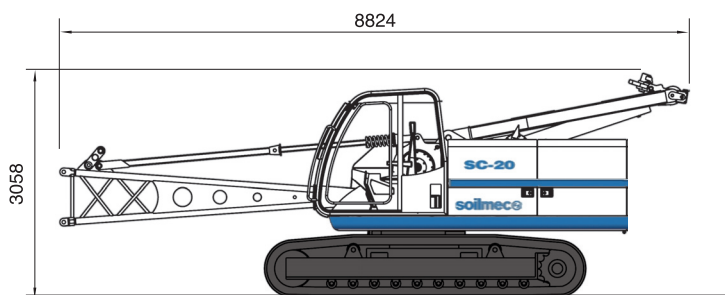
Main machine



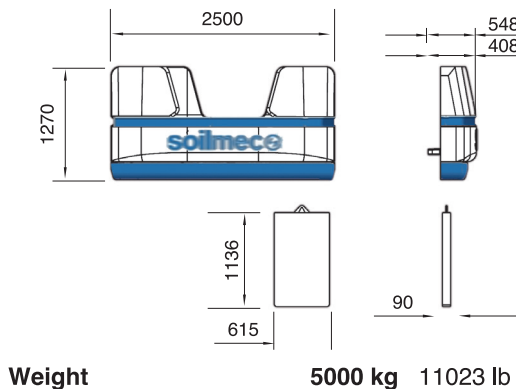
Boom



Base machine without counterweight



Counterweight



This brochure has been edited and distributed by SOILMEC Spa. The present document cancels and override any previous ones. This brochure may not be distributed, reproduced or exhibited without SOILMEC Spa. authorization in according to SOILMEC web site disclaimer condition.

SOILMEC Spa distributes machinery and structures all over the world, supported by SOILMEC Spa subsidiary companies and dealers. The complete Soilmec network list is available on the webpage www.soilmec.it