

Heavy Duty Crawler Crane

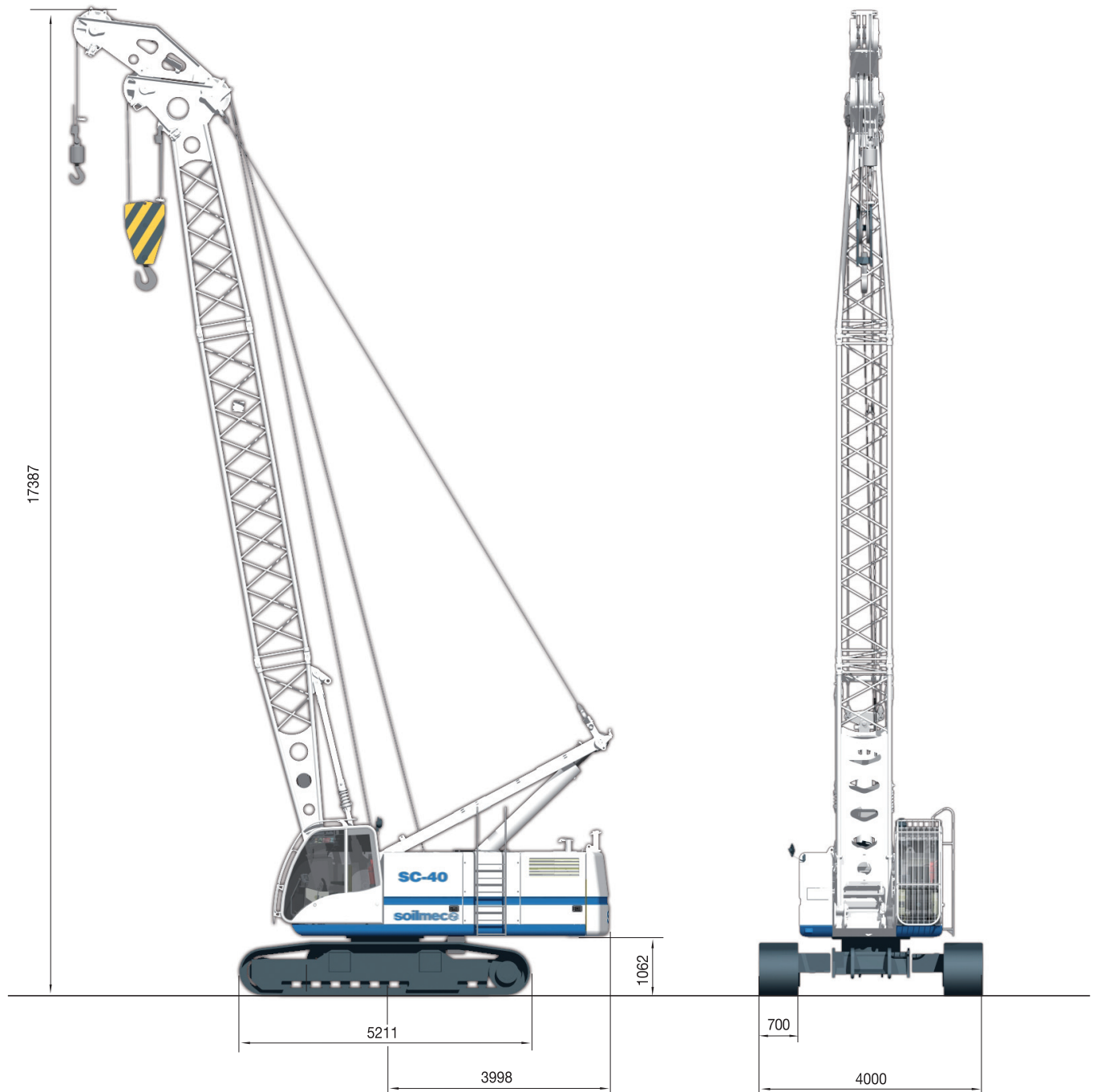
SC-40HD



soilmec 
Drilling and Foundation Equipment

SC-40 HD Heavy Duty Crawler Crane


MAIN BOOM EQUIPMENT




SC-40 HD Heavy Duty Crawler Crane

TECHNICAL DATA SHEET

DIESEL ENGINE

	Model	DEUTZ TCD 2013 V06	295 HP
	Max rated power @ 2200 rpm	220 kW	1.9 US gal
	Displacement	7,2 liters	
	Number of cylinders and Arrangement	6 in V - configuration	
	Aspiration	turbocharged, air to air intercooled	
	Cooling	water cooled	
	Electric system	24 V	
Emissions	US EPA/CARB Tier 3, EU 97/68 EC Stage IIIA		


HYDRAULIC SYSTEM

	Max working pressure	30 MPa	4351 psi
	Max oil flow	Main pumps: 2 x 280 l/min	2 x 74 US gal/min
	Cooling	oil-to-air heat exchanger	

MAIN WINCHES

Winch type	LFF-130	LW-130	LW-160	LW-80
Type	free fall	control descent	control descent	control descent
Drum groove type	Lebus	Lebus	Lebus	Lebus
Line pull (nominal load)	155 kN 34845 lb _f	153 kN 34463 lb _f	188 kN 42308 lb _f	116 kN 26167 lb _f
Rope diameter	26 mm 1 in	26 mm 1 in	26 mm 1 in	26 mm 1 in
Rope speed	70 m/min 230 ft/min	70 m/min 230 ft/min	80 m/min 262 ft/min	70 m/min 230 ft/min
Rope capacity 1st layer	32 m 105 ft/min	32 m/min 105 ft/min	40 m/min 131 ft/min	21 m/min 69 ft/min


SWING

	Swing bearing	Double-row ball type with external teeth
	Swing drives	Type: planetary 2 stages
		Hydraulic motor: fixed displacement piston
		Swing brake type: multiple disc
Max swing speed	3.1 rpm	


UNDERCARRIAGE

	Type	Variable gauge, class D5 (removable sides as optional)	
	Overall width (retr./ext.)	2550 / 4000 mm	100.4 / 157.5 in
	Overall length	5210 mm	205.2 in
	Track shoe width	700 mm	27.5 in
	Travel speed	1,1 - 2,2 km/h	0.7 - 1.4 mph

SERVICE REFILL CAPACITIES

	Fuel tank	650 l	171.7 US gal
	Hydraulic oil tank	600 l	158.5 US gal

NOISE EMISSION

 Noise emissions correspond with 2000/14/EC directive on noise emission by equipment used outdoors.

SC-40 HD Heavy Duty Crawler Crane

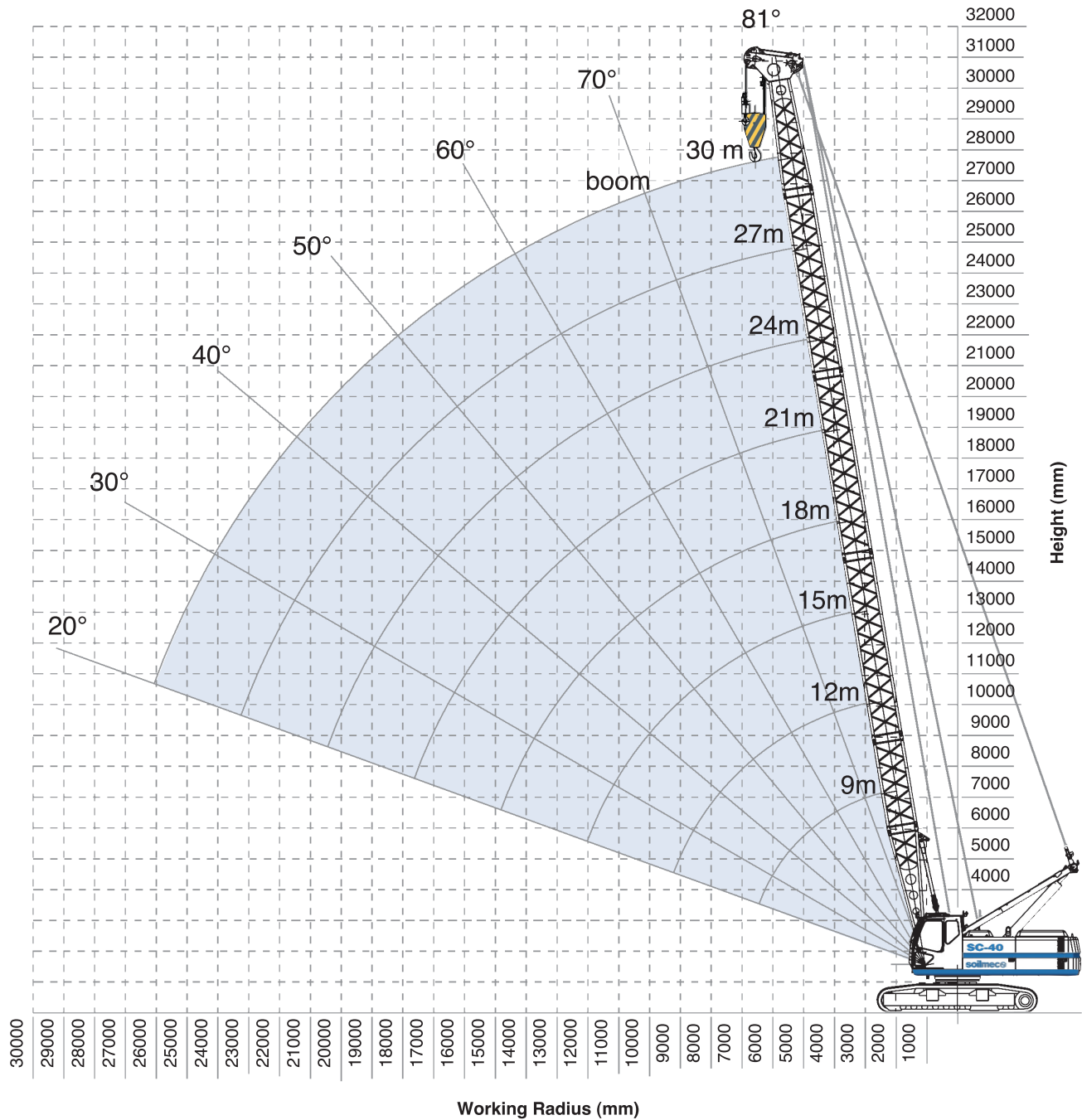
LOAD CHART

Capacity (t)									
Boom Length (m)									
Radius (m)	9 m	12 m	15 m	18 m	21 m	24 m	27 m	30 m	Radius (m)
3,0	40,0								3,0
3,5	34,0	33,6							3,5
4,0	30,3	30,2	30,0						4,0
4,5	26,0	26,0	26,0	26,0					4,5
5,0	21,8	21,8	21,8	21,8	21,7				5,0
5,5	18,7	18,7	18,7	18,7	18,7	18,6			5,5
6,0	16,4	16,4	16,4	16,4	16,3	16,2	16,1		6,0
6,5	14,5	14,5	14,5	14,5	14,4	14,3	14,3	14,1	6,5
7,0	13,0	13,0	13,0	13,0	12,9	12,8	12,8	12,6	7,0
7,5	11,7	11,7	11,7	11,7	11,6	11,5	11,5	11,3	7,5
8,0	10,7	10,7	10,7	10,7	10,6	10,5	10,4	10,3	8,0
9,0	8,9	8,9	8,9	8,9	8,9	8,8	8,7	8,6	9,0
10,0		7,9	7,8	7,7	7,7	7,6	7,4	7,3	10,0
11,0		6,8	6,7	6,7	6,6	6,5	6,5	6,3	11,0
12,0		6,0	5,9	5,9	5,8	5,7	5,7	5,5	12,0
13,0			5,3	5,3	5,2	5,1	5,0	4,8	13,0
14,0			4,7	4,6	4,6	4,5	4,4	4,2	14,0
15,0			4,2	4,2	4,1	4,0	3,9	3,8	15,0
16,0				3,8	3,7	3,6	3,5	3,4	16,0
17,0				3,4	3,4	3,3	3,2	3,0	17,0
18,0					3,0	3,0	2,9	2,7	18,0
19,0					2,8	2,7	2,7	2,4	19,0
20,0					2,5	2,4	2,6	2,2	20,0
21,0						2,2	2,3	1,9	21,0
22,0						2,0	2,1	1,7	22,0
23,0						1,8	1,9	1,6	23,0
24,0							1,7	1,4	24,0
25,0							1,5	1,2	25,0
26,0							1,4	1,1	26,0
27,0							1,3	1,0	27,0
28,0								0,9	28,0
29,0								0,7	29,0
Part line	4	4	4	4	2	2	2	2	Part line

Boom configuration										
Type	Lenght		N° of boom extensions							
Boom foot	4,5 m	14.7 ft	1	1	1	1	1	1	1	1
Boom insert	3 m	9.8 ft	–	1	–	1	–	1	–	1
Boom insert	6 m	19.7 ft	–	–	1	1	2	2	3	3
Boom head	4,5 m	14.7 ft	1	1	1	1	1	1	1	1
Boom lenght (m)			9	12	15	18	21	24	27	30
Boom lenght (ft)			29.5	39.3	49.2	59	69	79	88.5	98.5

SC-40 HD Heavy Duty Crawler Crane

MAIN BOOM



Auxiliary Jib

standard

Max capacity

11,5 t 23353 lb

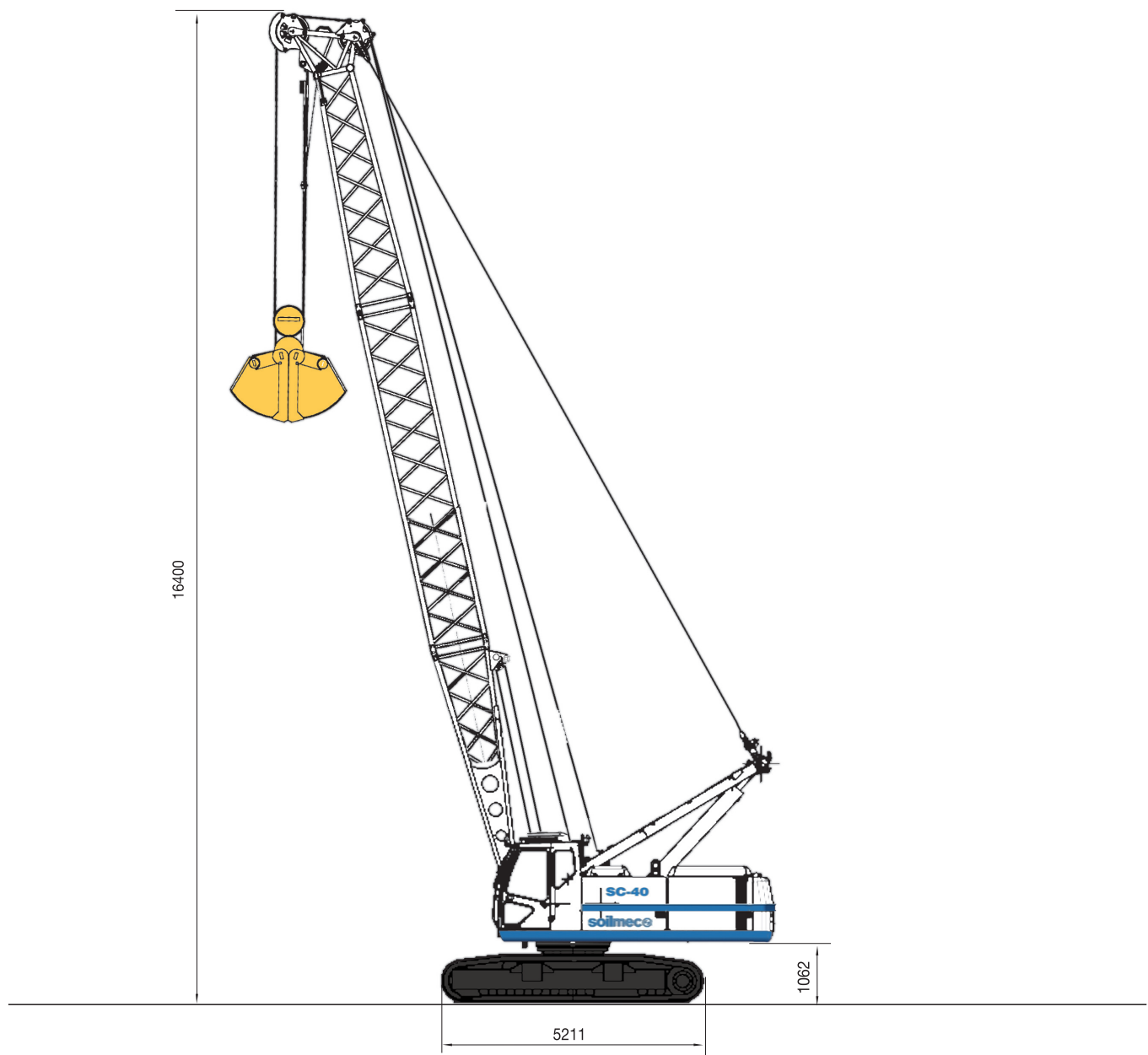
Load chart programmed in Load moment indicator

Notes

- Rated loads are in metric tons valid for 360 degrees working area.
- Lifting capacities are in compliance with DIN 15019/part2/chart 1 and ISO 4305 and do not exceed 75% of tipping load.
- Working radius is measured from the swing center of the machine.
- Rated loads are calculated with the machine on firm and level ground, without travelling.
- Weights of lifting attachments (e.g.: hook, ropes, bucket, etc.) are included in the rated load: therefore their weights must be subtracted from rated load to obtain net lifting value.
- This load chart is valid if crawler frames are extended.
- Lifting capacities are based on freely suspended loads. Operator must reduce lifted loads and operating speeds in case of adverse conditions (e.g.: wind, soft ground, out-of-level, pendulum action, sudden load stopping, operating speeds, etc.)
- This load chart is only for reference. For actual lifting capacities please refer to load chart in operator's manual.
- Instruction in the "Operator's Manual" must be strictly observed during machine operations.
- Operations are not approved for working radius and boom lengths that have no ratings associated on load chart.

SC-40 HD Heavy Duty Crawler Crane

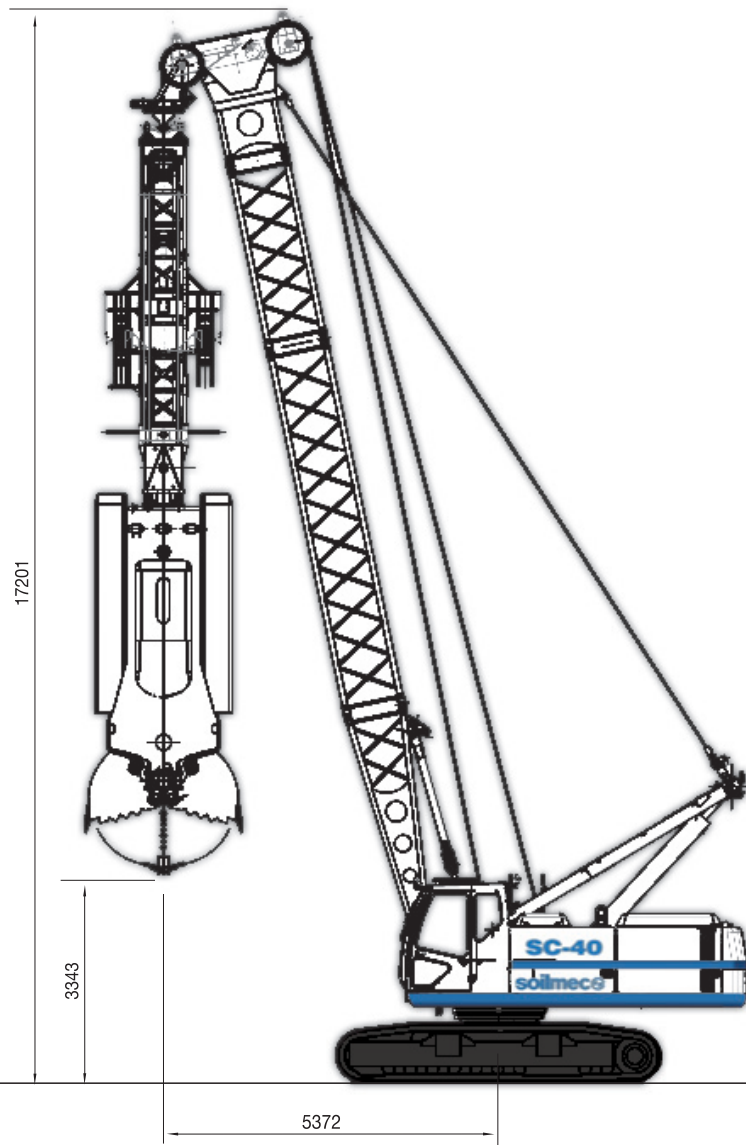
CLAMSHELL VERSION



Clamshell equipment		
Winches	13 t	28660 lb
Clamshell with one rope	13 t	28660 lb
Clamshell with two ropes	17 t	37478 lb

SC-20 HD Heavy Duty Crawler Crane

HYDRAULIC GRAB VERSION

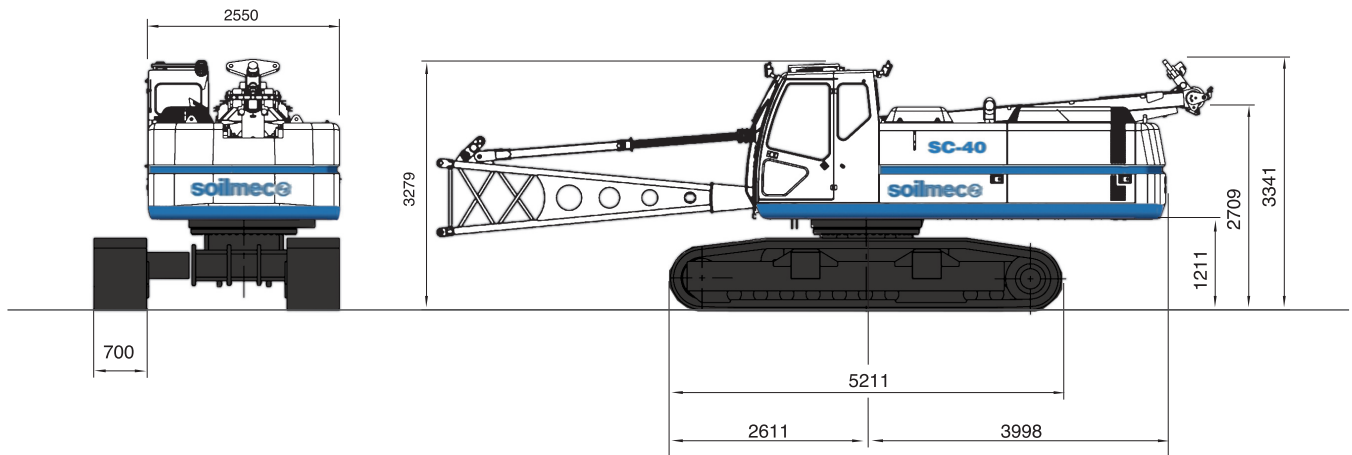


Diaphragm wall grab equipment		
Winches	13 t	28660 lb
Max grab weight	9 t	19841 lb
Max allowable weight in two rope operation	15 t	33069 lb

SC-40 HD Heavy Duty Crawler Crane

TRANSPORT, DIMENSIONS AND WEIGHTS

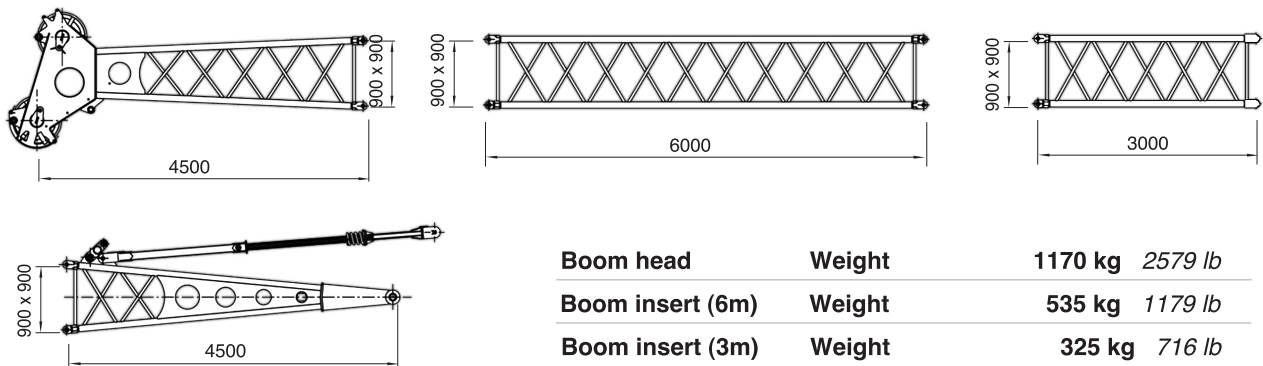
Main machine



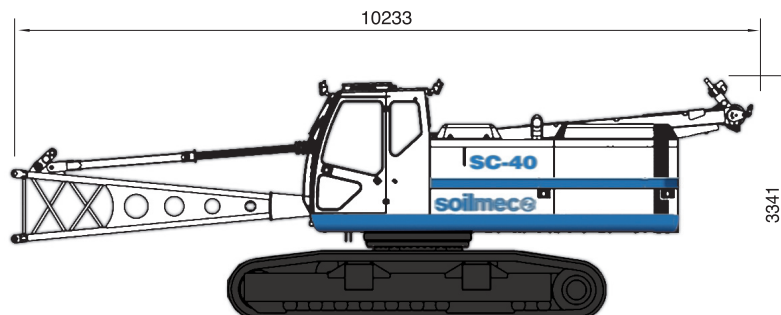
Base machine with counterweight

Weight 40680 kg 89683 lb

Boom



Base machine without counterweight



Base machine without counterweight

Weight 33500 kg 73867 lb

This brochure has been edited and distributed by SOILMEC Spa. The present document cancels and override any previous ones. This brochure may not be distributed, reproduced or exhibited without SOILMEC Spa. authorization in according to SOILMEC web site disclaimer condition.

SOILMEC Spa distributes machinery and structures all over the world, supported by SOILMEC Spa subsidiary companies and dealers. The complete Soilmec network list is available on the webpage www.soilmec.it